

HUXLEY HISTORICAL SOCIETY

Website: www.huxleyhistoricalsociety.org

VOLUME 16 ISSUE 3

Fall 2023

*** Board of Directors ***

President—Jolene Lettow

Vice President—Delila Roberts

Treas. & Hist—Nels Nord

Secretary—Nancy Neilsen

Publishing—Michele Kalsem

Member at Large—Hal Davis

Online on Facebook
www.HuxleyHistoricalSociety.org

PH: 515-231-9174

Email:

4HuxleyHistory@gmail.com

In Person

“The Hub” museum is located at
515 N. Main in the 3C’s building or
make an appointment to visit the
Nord-Kalsem Shelter House.

Hours: M-F 8:30-10:30 AM

or call to make an appointment.

Huxley Historical Society

*Invites
Members
to a Maland Home Event
306 N. 1st Avenue*

*Sunday, October 1, 2023
2:00-5:00 pm*

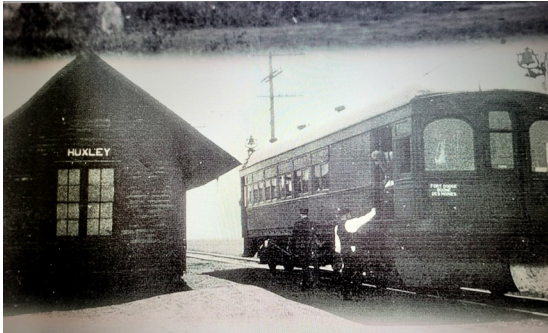
- Tours of Remodeled Home -

Light Refreshments Will Be Served

Mission Statement: *To engage and support the community of Huxley, Iowa in the preservation, education and celebration of our heritage and ancestry. To preserve for research and education, the artifacts, information, and verbal histories about the lives of the people of Huxley from its pioneer origins to the present day and into our future.*

The Fort Dodge, Des Moines and Southern Railroad Co.

By Nels Nord—Historian



The Fort Dodge Des Moines and Southern Railroad Company started in the late 1800s and ended in 1968 when the FTDDM&S railroad was purchased by the C&NW (Chicago and Northwestern).

The Fort Dodge Des Moines and Southern Railroad Company was started in the town of Fraser, a coal mining town in Boone County. The Fraser power plant and dam across the Des Moines River was built in 1907. This is when the new electric railroad was started. The electric generated passenger car tracks went south from Boone through Napier, Kelley, Huxley, Alleman, Ankeny and into its final destination, Des Moines. Branch lines were then built from Kelley to Ames.

The power lines out of the main power plant at Fraser were 22,000 volts. This direct current was the feeder which connected at intervals to the overhead trolley cars that fed the electric engines and interurban passenger cars to get their power to operate. There was a substation at Kelley which fed electricity to the town of Huxley until 1960.

The freight trains came to Huxley every night transferring freight to the Milwaukee Railroad and returning with freight to Boone.

The first interurban trolley came to Huxley in 1907. The tracks were on the west side of Huxley and the depot for the Fort Dodge Des Moines and Southern Railroad was located at South 5th Avenue and West 1st Street. The interurban depot closed in 1953.

The interurban passenger car served the Huxley community well. Citizens could ride the train to Des Moines to shop and return the same day. Round trip fare was 75cents. The passenger trains ran every twenty or thirty minutes. Rides on the electric interurban were not very smooth or quiet, but the electric train was a convenient way to travel.

Some of the information obtained for this article came from a story by Frank Shaeffer, the depot agent from Kelley, who worked 35 years for the Fort Dodge Des Moines and Southern Railroad Company. Frank's three sons: Tom graduated from Huxley High in 1956; Larry, long-time Ballard principal and boys' basketball coach, was in the first graduating class of Ballard in 1959; and Steve graduated Ballard in 1962.

The Chicago & Northwestern Railroad continued to use the tracks to haul freight from 1968 until the mid-1980s when the tracks were abandoned.



~ end

Historical Society Members:



We want your stories. Many of the articles in the Historical Society newsletter have been about past or present members and/or residents of Huxley. We have discovered that our readers enjoy the articles that tell a persona story from years past. WE WANT YOUR STORY! If you have a story to tell, or one to share, please let the Historical Society know. Even if you don't think you can write, the Historical Society can help edit or put it into words the story from your past. There are many interesting stories out there and everyone would love to read them!! Let the Historical Society make your historic story part of the present.

Contact Nels Nord: 515-231-9174

Huxley High Alumni That Have Gone Before Us

Jerold Peterson, 6-16-2023, Class of 1960

Mary White Ingersoll, 6-29-2023, Class of 1958

Owen John Kalsem, 7-2-2023, Class of 1948

Carrie Dueland Witt, 12-24-2022, Class of 1951

APLAND CENTURY FARM

By Nels Nord—Historian

Ole Apland was born in 1828 in Norway and immigrated to America in 1854. Ole was one of the four committee members who headed West from Lisbon, Illinois, to Central Iowa to explore the farming possibilities for the Palestine Congregation. From 1848 to 1854, there was a large contingent who immigrated to America from three parishes in Norway known as Etne, Skaanevik and Fjeldberg. These parishes settled around Lisbon, Illinois. Along with Ole Apland the other men were: Osmond Sheldahl, Olie Fatland, and Osmond Johnson. They left Lisbon, Illinois on September 25, 1854. They rode in a two-seated spring wagon drawn by a span of horses. The reason the four men were selected is they could speak the English language fairly well. They returned thirty days later and reported they had secured land for the colony. On May 17, 1855, the 108 members of the Palestine Congregation headed West to Iowa.



Photo circa 1875

Ole Apland was the fifteenth man to apply for a marriage license in Story County and it was the first Norwegian couple to get married in the State of Iowa. His wife was Anna Ersland. Ole died on July 25, 1879, at age 51. Anna died on January 8, 1914. They were buried in the Fjeldberg Cemetery. Ole and Anna were both born in Skaanevik, Norway.

Ole and Anna Apland made their home on a farmstead southeast of Huxley. They had 14 children, ten of the fourteen are: Ole O., Julia, Knute, Carrie, Rachel, Lizzie, Anfin, Elias, Peter and Martin.

Knute Ole Apland was born in 1858, and his wife Tomina Erickson was born in 1862 in Rosaland, Norway. One of their daughters was Anna Olive Apland (1884-1957) who married Andrew A Freeland (1881-1967). They were married December 9, 1903, at the Nazareth Lutheran Church in Cambridge, Iowa.



Photo circa 2015

Knute grew up southeast of Huxley and attended school in the Norway school district near Huxley. He was confirmed in the Fjeldberg Lutheran Church on October 26, 1873. Knute was a farmer and store owner in central Iowa. He retired from farming and moved to Cambridge in 1918.

On May 24, 1872, Tomina Erickson along with her parents left Stavanger, Norway, for America on the ship, "Carl Johan," and headed for Quebec, Canada. Tomina was 8 years old when they arrived on July 9. Their family made their way to central Iowa. She married Knute Aplan at the Palestine Lutheran Church on March 6, 1883. She passed away on December 14, 1959, in Shawnee Mission, Kansas. Knute died in February 15, 1933 in Cambridge.

- Andrew A. Freeland (born August 8, 1881 in Sandes, Rosaland, Norway) and Anna Olive Aplan had five children: Mary (1905-1991), Kermit (1907-1984), Ernest (1909 died at birth), Elden (1913-1978), and Arlene (1916-1997).
- Mary Almyra Freeland married Elling Sandve February 20, 1935 and they had one son, Paul, who graduated Huxley High in 1955.
- Kermit Thomas Freeland married Flora Sydnes on Oct 1, 1932, and they had four children: Esther a 1955 graduate of Huxley; Diane a 1959 graduate of Ballard; Mark a 1961 graduate of Ballard; and Margaret a 1962 graduate of Ballard.
- Elden Wilford Freeland married Esta Whitney and they had four children: Richard a 1953 graduate of Huxley High; Daryl who passed away at 3 years of age from brain cancer in 1942; Kent a 1962 graduate of Ballard and Alan a 1966 graduate of Ballard.
- Arlene Andreane Freeland married Guy Brown January 1, 1935 and they had one daughter Dolores Brown. Dolores married Orville Hauge, a 1952 graduate of Huxley High.

The Aplan Farm is located southeast of Huxley on Highway 210. Kermit Freeland, grandson of Knute, farmed the original Aplan Farm from 1932 to 1984. The barn on the farm was built in 1875 by Jens Russell of Cambridge. It was a huge barn that housed a milking parlor, field horses, and a haymow that was huge.

Kermit Freeland passed away in 1984, but his wife, Flora, began the restoration process with advice from the Iowa Barn Foundation.

In 2022, Larry and Kay Thompson purchased the acreage and barn from Kermit and Flora Freeland's children (Esther, Mark and Margaret). The huge barn was transformed into a wedding/event venue at a cost of hundreds of thousands of dollars and is named the "1850 Homestead." Michelle, Larry Thompson's daughter, will live in the remodeled house on the acreage and will manage the venue.

The old farm house, the 145 year-old barn, an old tool shed, and the old school bell from the Aplan school house (which burned down in 1939) are all that is left from the original Aplan Farm.

The venue is 100% family owned and operated by the Larry Thompson family.

~END~



Photo 2023

Huxley



Membership Form—Clip or copy and mail

Name _____

Address _____

Email _____

Phone _____

Annual Membership \$ 20.00

Lifetime Membership \$500.00

Donation \$ _____

Fjord Recipe Booklet \$ 5.00

2nd Ed. DVD / 1939-1955 \$ 20.00

Shipping and Handling for Book/DVD \$ 5.00

Total \$ _____

Ck # _____ Date _____

Mail to: HHS
515 N. Main Ave
Huxley, Ia. 50124



*****NOTICE*****

Effective immediately membership fees will be due in January of each year.

Please share stories and photos with Huxley Historical Society by emailing them to 4huxleyhistory@gmail.com or mail to HHS, 515 N. Main, St. Huxley, Ia. 50124

Website: www.huxleyhistoricalsociety.org