

# HUXLEY HISTORICAL SOCIETY

VOLUME 10 ISSUE 3

Website: [www.huxleyhistoricalsociety.org](http://www.huxleyhistoricalsociety.org)

Summer 2017

## 2017 Officers

### President

Nels Nord

### Vice President

Delila Roberts

### Secretary

Janet Stoll

### Treasurer

Jolene Lettow

### Member-at-Large

Judie Weyer

### Newsletter

Janet Stoll

### Webpage

**"Volunteer Needed !!"**

### 2017 Calendar:

*Meetings are the 4th  
Monday of the month  
at 6:00 pm in the city  
Council Chambers*

**"The Hub"** museum is  
located at **515 N. Main** in the  
3C's building.

### Summer Hours:

April – September

Tuesday & Thursday

8:30 - 10:30 am

or call Nels to set up a visit

515-231-9174

## Nords Notes

### ~ A word from our president ~

This story is about the 40<sup>th</sup> anniversary of the Norwegian settlers of 1855, written by Andrew Maland, former editor of the Slater News.

Elizabeth and Javerna Maland gave the Huxley Historical Society several stories that Andrew had written. I believe Andrew was their uncle.

On August 27, 1895, Ole O. Heggen, Thomas Weeks, K.B. Thompson, L.L. Larson, Andrew Nelson, O.S. Heggen, Henry Fatland, Lewis Heggen, and Amos K. Ersland met at the Fjeldberg school house, south of Huxley, to make arrangements to celebrate the 40<sup>th</sup> anniversary of the Norwegian settlement of Story and Polk Counties.

The "Old Settlers Picnic" was formed and it was to occur every 5 years. The celebration was held on Wednesday, September 18, 1895, in Huxley. The program began at 10:30 am with Andrew Nelson presiding. The Slater band played several selections, followed by the Fjeldberg-Palestine choir. Erick Sheldahl led the prayer and Rev. Osmond Sheldahl gave the address of welcome. Rev. Ole Anfinson responded to the welcome.

The after dinner program began with a concert by the band and songs by the chorus. Addresses by Rev. Guttebo and Rev. Thvedt were followed by talks by the old settlers, Oley Nelson, Knute Bauge, Erick Sheldahl, John Stenberg, K.B. Thompson, Andrew Nelson, A.K. Ersland, Henry Fatland and others.

A parade began with a lot of the old settlers and their wives followed afoot. The settlers were followed in buggies with the first surrey having Rev. Osmond Sheldahl and Rev. Ole Anfinson, both leaders in the first caravan of pioneers that settled around Huxley.

The crowd of close to a thousand came early and remained till late afternoon. It was very successful and continued every five years until the last one being held at Huxley on June 28, 1945. The meeting places had been alternated with Slater, Huxley and Cambridge.

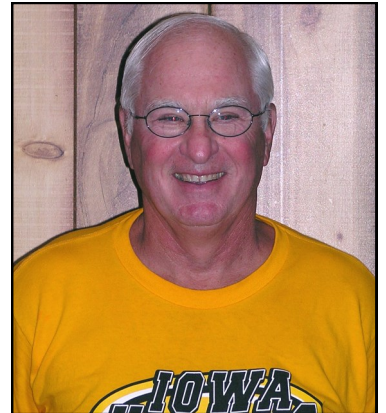


1855-1915 - 60th Anniversary Norwegian Pioneers

The early pioneers on landing in America had very little money but they possessed a tremendous will and strong faith in God, faith in their fellowman and faith in themselves, ready to work out their own destiny. In a strange land, they accepted the challenge of the wild prairie and the hardship of pioneer life.

They were men and women with deep religious convictions and tremendous courage to leave Norway and go through with what they did to reach Huxley, Iowa.

~ Nels Nord, HHS President ~



\*\*\*\*\*

**MISSION STATEMENT :** *To engage the Community of Huxley, Iowa in the preservation, education, and celebration of our heritage and ancestry. To preserve for research and education, the artifacts, information, and verbal histories about the lives of the people of Huxley from its pioneer origins to the present day and into our future.*

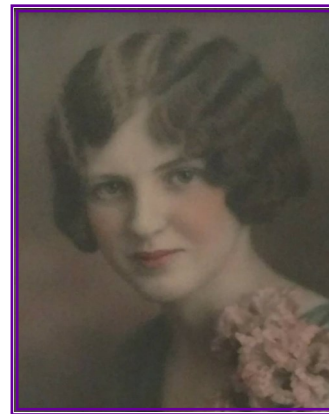


104th Birthday Party

## Elizabeth Marie Willina Maland

February 16, 1913—April 17, 2017

Elizabeth M. Maland was born February 16, 1913 to Martin and Mary (Severeid) Maland in Huxley, Iowa. Elizabeth graduated from Huxley High School in 1930 and worked as a bookkeeper, and as a nanny for the Hiram Munn family. She was a member of Palestine Lutheran Church where she enjoyed church activities and quilting. Elizabeth also took much pleasure in entertaining family and friends in her home.



High School Senior Photo

Elizabeth passed away at 104 years of age on April 17, 2017 at Israel Family Hospice House in Ames, Iowa

~ On April 22, a beautiful Saturday morning, friends and family gathered to celebrate the life of Elizabeth Maland. Her visitation started at 9:30 am, with her funeral service following at 10:30 am. Although Elizabeth did not have any children of her own, over 60 family members gathered together in the fellowship hall before walking into the sanctuary for the service. Elizabeth's service was given by Pastor Eric Klimpel.

We thought our Huxley Historical Society members, if you were unable to attend, would appreciate taking part by reading Pastor Klimpel's wonderful service. Also, a dear friend of Elizabeth, Julie Huxford, gave a wonderful and touching eulogy. ~

## ~ Welcome in the name of the risen Jesus to our little "shindig" this morning ~

William Howard Taft (1909-1913) Woodrow Wilson (1913-1921) Warren G. Harding (1921-1923) Calvin Coolidge (1923-1929) Herbert Hoover (1929-1933) Franklin D. Roosevelt (1933-1945) Harry S. Truman (1945-1953) Dwight D. Eisenhower (1953-1961) John F. Kennedy (1961-1963) Lyndon B. Johnson (1963-1969) Richard Nixon (1969-1974) Gerald Ford (1974-1977) Jimmy Carter (1977-1981) Ronald Reagan (1981-1989) George Bush (1989-1993) Bill Clinton (1993-2001) George W. Bush (2001-2009) Barack Obama (2009-2017) Donald Trump (2017- ) (**19 Presidents**)

### Invented in 1913:

1. *The Bra*
2. *The Parachute*
3. *Windscreen Wipers*
4. *The crossword puzzle*
5. *Modern X-Ray tube*
6. *Geological Time-Scale (realize how much older the earth actually is)*
7. *Brillo Pads*
8. *Mass production*
9. *Stainless Steel*

I am blown away by the change that has taken place since Elizabeth Maland entered the world 104 years ago. Elizabeth was born into a small Norwegian community of 300 people (*Huxley, Iowa*), hardworking from a young age along with her sister Javerna in part because of the times and also the work ethic prominent in her life and community.

I've been told by many who knew them that Elizabeth was more the indoor homemaker and Javerna was more the outdoor *"in the field with the guys"* type (*some might say a modern day "Mary" and "Martha" duo*). What I've learned from Elizabeth over the few years I've visited with her is the secret to a long life *"hard work and poor pay"* – *no not really* – but rather a sense of purpose, your work surely along with the relationships and care-taken along the way. Neither sister was married, yet it might be said that they never lacked for family, children, grand-children or otherwise. Over the years they have hosted 30-40 boarders in the upstairs of their home, mostly teachers starting out, and of those 15 or so still stayed in touch. I have heard it said that their front porch hospitality is legendary. It was always exciting to find out who was over visiting on the porch on any given day and thank God for the invention of the telephone in every home.

Seems like Elizabeth was always around and about people, at church, on the porch, as a nanny for many years officially with the Munn children and unofficially with many others, while sharing of her time, her life, and leaning on God's grace, Elizabeth understood true abundance – not things but people and the love you share, and the care you give. Elizabeth's generosity allowed for a wonderful blessing to the community she loved in giving the homestead to the Historical Society of Huxley, or another way of putting it – she left what she could to her "family", her legacy here on earth.

When I had a chance to visit with Elizabeth, I would sit right next to her and I would want to ask so many things about life, lessons, the changes she experienced, but however far I got, a moment would come when she would say, *"That's enough about me.. How are you doing? Are you taking time off with your family? You need to take care of yourself...you're not much good to anyone if you don't rest from time to time."*

I realize that we just celebrated the resurrection of Jesus, the Christ, and I can't help but carry that joy into this morning. Can we really approach this day with a sense of tragedy, has death really won a battle here? Yes, I grieve as you do – a hole in the soul of this community is present with the death of a beloved matriarch, and I feel that loss; however, what I also feel is best characterized in the vision of God's open arms with the words well done good and faithful servant, come and share in the peace of your Father. Death has become subject to life as just another opportunity to experience even more love and deeper relationship(s) in the Father.

Speaking of Mary and Martha...when Jesus came to the tomb of Lazarus, his friend and brother, I get the idea that Lazarus was a beloved man of the community himself – merciful, with sisters who adored him, friends who mourned him, wealthy and tied to the community, even Jesus deeply mourned in the shadow of his friend's death, such is the heart of God for all of us. Here's what gets me...Jesus confronts the abundance of life in Lazarus, how could he not be moved...Jesus enlists the challenge and faith of the sisters and the crowd, as well as drawing on their love and care for Lazarus that those same people assist in this miracle!! ***They call for Jesus to come. They meet Jesus even before he arrives. They challenge Jesus in the relationship they shared. They take Jesus to the unclean place, the tomb. They move the stone away, and they un-wrap the body – unbinding and freeing him with Jesus.***

The raising of Lazarus is the power of God at work in a community (*shaped*) touched by love and generosity. Where we encounter death in this story is real but more like the pause between breaths because of the Easter reality (*new normal*), death has taken its place in the purposes of God for life, new life – full life in Christ. Life may have left her body, we can testify to that fact, yet life persists in this room in a new way in appreciation, in thankfulness, in friendship and in tears laced with love for someone else – for Elizabeth and for the neighbor. Jesus says to you once more today, "I am the resurrection and the life. Those who believe in me even though they die will live, and those who live and believe in me will never die. Do you believe this?" To believe this is not to believe in some future event itself but in the right now...this minute in the midst of this funeral service even though there is death there is life as well because Jesus lives. And he meets us on the porch today. Amen.



Gathering of family before Elizabeth's service



Pastor Eric Klimpel visiting with Elizabeth at her 103rd birthday celebration.



## Precious Memories of Elizabeth

I was asked to write up something for the newsletter in memory of Elizabeth. Where do I start with such wonderful memories of a very sweet lady.

Elizabeth was born in 1913, the same year as my grandparents, Palmer and Jean Saveraid, also of Huxley. From the time I was little and until Grandpa Palmer and Grandma Jean were older and still in their home, we always heard good things about Elizabeth and Javerna. The sisters were first cousins to my Grandpa Palmer and they had grown up together.

They all enjoyed each other's company throughout the years. Whether it was just visiting on the Maland Home porch, playing cards at grandpa and grandma's house, or Grandpa Palmer working on projects at their house it was fun times for all of them. Likewise, I often heard how wonderful my grandparents were from the Malands as well.

Elizabeth often reminded me of how grandpa had hung the big woven blinds on their front porch "just perfectly". Javerna would also talk about how grandpa would help her with their vehicles and any projects around the house that needed a man's attention. The four of them often enjoyed taking vacations together through the years. We all always enjoyed Elizabeth and Javerna at our Saveraid reunions.

Now that Elizabeth is gone, it's sad as she was the last one of that generation. It seems like she should still be here just as she always was. My mom, Darlene Kalsem, says she catches herself thinking "I need to call Elizabeth or stop to see how she is doing today". But then mom remembers that Elizabeth is looking down on us instead.

**E** - Extraordinary, exceptional, encouraging, enthusiastic, and easy going are just a few words that come to mind when remembering Elizabeth. We all love her and miss her kind and gentle spirit.

**L** - Love of family and friends was very true and genuine. Elizabeth always listened to you and was truly interested in our lives. She loved hearing about family events and activities. On the 4th of July last year she spent the day at my house and just loved sitting out in the yard visiting. She got the biggest kick out of my grand dog, Pooter! Elizabeth always loved dogs and really enjoyed visits from furry friends. I can still hear her laughing watching the dog! At the end of a perfect day Elizabeth rode home in Grandpa Palmer's 1928 Model A. She loved that ride!

**I** - Interesting. Elizabeth had so many stories to tell! What changes she saw in her lifetime! Her advice for a long and happy life was "hard work and cheap pay", followed by a big smile and laugh! Her strong faith was evident in her daily activities and all walks of life.

**Z** - Zest for life! You could see the sparkle in her eyes, see it in her smile and hear it in her laugh! You knew you'd said something noteworthy when she exclaimed "oh my stars" or "isn't that the limit"!

**A** - Always had something good to say! Always encouraged us to go see the kids and have fun and not to worry about her, but she always asked for you to "check in" when you returned.

**B** - Blessing to all. Elizabeth was a beautiful, faithful and gentle servant. The love she showed for God, her family, friends and church was amazing. She blessed everyone she came into contact with during her life time. Throughout the years while the sisters were growing up and also when they were adults, the Maland family was always ready to help out those in need and took many in their home until they got back on their feet. Long lasting friendships were formed with numerous renters throughout the years and the renters continued to stay in contact with the family.

**E** - Excited to be at the first annual "Pie on the Porch" last July. It was her first visit back to her home and she loved seeing her home again. She truly loved seeing the visitors enjoying her home. Elizabeth and Javerna blessed this community with the generous gift of their home. We truly hope the Maland Home remains an important part of Huxley's history. We will try our hardest to preserve it for future generations and to honor Elizabeth and Javerna.

**T** - Treats! Elizabeth loved going for car rides and frequent stops at McDonald's, Perkins and Dutch Oven Bakery. She always had a cheeseburger and coffee at McDonald's, as they have the "best coffee"! She loved pancakes from Perkins, rice pudding from Fareway and sweets and coffee from Dutch Oven Bakery.

**H** - Humble, kind and a very positive attitude! Elizabeth never complained and if she had a little ache or pain, she would always say "I'm not going to complain.....it could worse"!

Here's to you dear Elizabeth, may we all live such a blessed life and learn from you!

Sincerely,  
Susie Schaudt

C  
E  
L  
E  
B  
R  
A  
T  
I  
N  
GE  
L  
I  
Z  
A  
B  
E  
T  
H  
  
M  
A  
L  
A  
N  
D

As I returned things to the Maland Home tonight these beautiful pink blossoms were blooming right outside the back door. How fitting for a special end to the day remembering this kind and gentle servant of our Lord and beautiful service at Palestine Lutheran Church. I'm sure Elizabeth loved the "big party on the porch" today. We were so blessed to have had her in our lives for 104 years! Blessed be the memory of our sweet Elizabeth.

~ Susie Schaudt~  
April 22, 2017



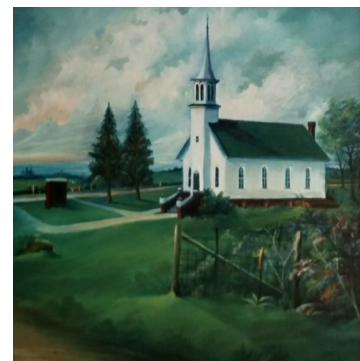


Palestine Lutheran Church  
~ painted 1959 ~

### Mrs. Harry Wee ~ local artist !!

In our Spring issue we shared a poem that was written by Mrs. Harry (Mabel) Wee. It turns out that Mabel was an avid painter as well and two more pieces painted by Mabel have been donated to the Huxley Historical Society. The painting on the right is now displayed in the Maland Home.

We also discovered that before donating the large Fjord painting to the HHS, the Sandve's wrote some details on the back of the painting. We are in the process of having a plaque made for the painting in honor of Mabel Wee.



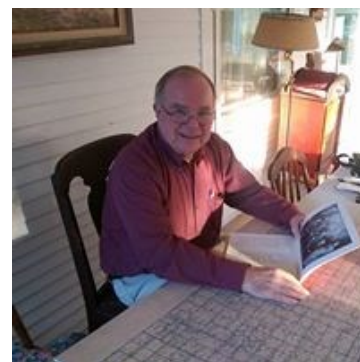
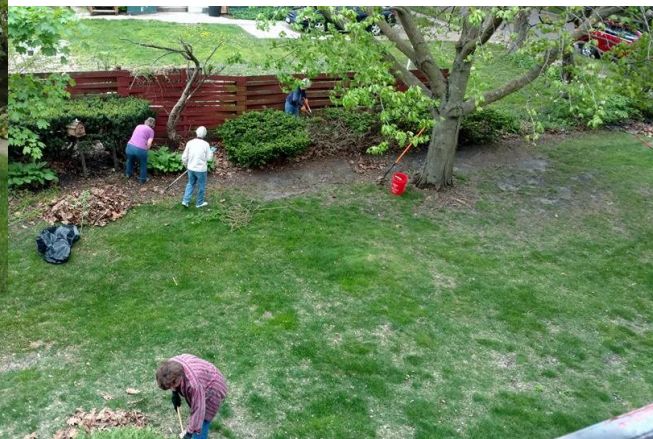
Palestine Lutheran Church  
~ painted 1947 ~



~ Volunteers ~

L - R: Delila Roberts, Richard Sydnes, Janet Stoll,  
Linda Sharpnack, Darlene Kalsem, Celeste Allen

After being rained out on May Day, our wonderful volunteers got together on May 8th. They helped rake and bag the many Fall leaves from the large shade trees at the Maland Home. They cleared a lot in just a few hours!



Following the HHS Annual meeting in April, Gerald Klonglan provided a visual tour of Meland Norway through an informative and picturesque slide show and narration.



LIKE US ON FACEBOOK !!!  
240 likes so far!





## HUXLEY HISTORICAL SOCIETY TREASURER



Since January of 2007 Scott Petersen has served as treasurer for the Huxley Historical Society. He has decided to pursue other interests. He has assured us he will remain a member of HHS and looks forward to seeing what the future holds for the Huxley Historical Society. We would like to thank Scott for his dedication to his position on the HHS Board for the past 10 years!

If you have stories and photos you would like to share, please send them to the Huxley Historical Society.

You can either send them by email to [hhs@huxcomm.net](mailto:hhs@huxcomm.net) or by mail to HHS, 515 N Main St, Huxley, IA 50124

The Huxley Historical Society has a new Treasurer! Jolene Lettow was nominated to the board position at the May 22 meeting. Jolene has been a resident of Huxley for over 20 years - and that does not include all the years she has lived just outside of Huxley as Delila Roberts' (another HHS board member) oldest daughter. Jolene is a graduate of Ballard and grew up in the community. She brings experience to the Huxley Historical Society's Treasurer's position as she currently manages the finances for the City of Huxley as the Finance Officer/City Clerk and has been in that job for almost ten years. Jolene shares in the enthusiasm of the history of the Huxley community and is thrilled to serve on the Maland Home Committee as well.



The Gilbert Chapter of Beta Sigma Phi (service sorority) met at the Maland House on June 1, 2017 for their annual salad supper. Prior to the meal, 13 members learned about the history of the house and Javerna and Elizabeth Maland's life in the house from Helen Kepler. The salad supper evening was complete with a summer vibe theme of tropical colors, pink flamingos, and Mermaid Lemonade. After the meal, a business meeting was held. The sorority made a donation to the Maland Home, along with some individual donations.



Attending were:

Rosi Brandt  
Jacki Foley  
Cindy Kruckenberg  
Carol Peterson  
Sharon Popp  
Sharon Prochnow  
Sharon Romsey  
Jean Saveraid  
Jan Snider  
Dee Stenstrom  
Jeannette Tharrington  
Peg Uthe  
Mary Vannoy.





# Huxley Police vs Huxley Fire

## FUNDRAISER

sponsored by the Huxley Historical Society



# FIRE



# POLICE



***Agency who receives the most donations gets the Pie in the Face!!***

**WHEN:** Huxley Prairie Fest - Saturday August 26, 2017 - 11:45 am  
**WHERE:** Railway Park Amphitheatre

Proceeds will benefit the Huxley Police & Huxley Fire Departments

Find the Red and Blue donation cans around Huxley to place your "pie" vote !!



# Huxley Historical Society invites you to visit Huxley's newest historic landmark



**SECOND ANNUAL**  
*Pie on the Porch at the Maland Home*  
*306 N. 1st Avenue*  
*Sunday, September 24*  
*1:00-4:00 pm*  
*\$5.00 for a slice of pie and a slice of history!!*

## 2017 Membership Form—Clip or Copy and Mail

Name \_\_\_\_\_

Address \_\_\_\_\_

Email \_\_\_\_\_

Phone \_\_\_\_\_

2017 Annual Membership \$ 20.00

Lifetime Membership \$ 500.00

HHS donation \$ \_\_\_\_\_

Maland Home donation \$ \_\_\_\_\_

The Fjord recipe booklet \$ 5.00

S&amp;H for booklet \$ 2.00

2nd ed. DVD Purchase \$ 20.00

S&amp;H for DVD \$ 2.50

Total \$ \_\_\_\_\_

Mail To: **HHS-515 N. Main Ave-Huxley Iowa. 50124**Office use only: check # \_\_\_\_\_ date of check \_\_\_\_\_  
email \_\_\_\_\_ label \_\_\_\_\_ member list \_\_\_\_\_FOR MORE INFORMATION PLEASE CONTACT US AT ONE  
OF THE FOLLOWING:

EMAIL: HHS@HUXCOMM.NET

PHONE: NELS NORD 515-231-9174

\*\*\*\*\* **SAVE THE DATE** \*\*\*\*\***August 26th** - Huxley Prairie Fest\* *Pie Eating Contest at the Huxley Amphitheater*

\*\* Police vs Fire - Pie in the Face \*\*

**September 24th** - *Pie on the Porch* - 1-4pm

Maland Home - 306 N. 1st Ave

Prefer to get your newsletter online?

Email and let us know!

**hhs@huxcomm.net**

## HUXLEY HISTORICAL SOCIETY

515 N. Main Ave  
Huxley, IA 50124Name in Blue?  
Take a Moment to Renew!Website: [www.huxleyhistoricalsociety.org](http://www.huxleyhistoricalsociety.org)