

# HUXLEY HISTORICAL SOCIETY

Volume 6 Issue 2

WWW.HISTORY.HUXLEYIOWA.ORG/

2nd half - 2013

## 2013 Officers

- **President**—Nels Nord
- **V.P.** — Don Duncan
- **Sec.**—Janet Stoll
- **Treasure**—Scott Petersen
- **Publishing**—Michele Kalsem

## 2013 Calendar:

Meetings are generally the  
4th Monday of the month  
at 6:30 Pm in Council  
Chambers.

Our home is located at  
515 N. Main in the 3C's  
building call

515-231-9174 to view  
or consult.

President of the Huxley Historical Society, Nels Nord, has been SUPER busy since he retired! Doing what you ask? Managing the display space, the City of Huxley graciously has allowed us to utilize, that's what!

Opened in January 2013, if you have not had the opportunity to visit, it's worth your time. Located in the room across from the elevator in the 3C's building every wall and 3 display cases are overflowing with memories and history from our community.

Nels has a tremendous amount of knowledge that he loves to share.

He remembers a lot from his lifetime in Huxley and he researches other things. The collections that he enjoys sharing the most is related to the Huxley School. On display are the Huxley class pictures from 1922-1956, uniforms from both baseball and basketball teams, and Huxonian volumes from 1947-1956. Another interesting item, that Nels likes to share with visitors, are the Huxley High School Newspaper, The Huxonian from 1923-1950.



Cont. pg 2

**MISSION STATEMENT** :To engage the Community of Huxley, Iowa in the preservation, education, and celebration of our heritage and ancestry. To preserve for research and education, the artifacts, information, and verbal histories about the lives of the people of Huxley from its pioneer origins to the present day and into our future.



## Do you know someone that has Huxley Historical memorabilia?

How about photo's or a great life story?

Let us know! Call Nels 515-231-9174

On the east wall hangs a 1939, menu board from the Dobbe Café. Its impressive at 4 foot by 4 foot used for both the menu and advertising. Hand painted and elegant this sign is a spectacular piece of Huxley History.

The display case that sets below the sign came from Hartwick Swensons Jewelry store, it was located on N. 2<sup>nd</sup> near where Fjeldberg church is now. Speaking of Fjeldberg our collection also boasts Church records, Cemetery records and some family genealogies.

Also in our display is OJ Saveraid's scale and mortars from the drug store, ribbons from the Huxley Horse Shows and many photos of Huxley. Our town is full of treasures from the past, and some of them are stored in our little room. Nels would love to share them with you!



The display room is open 3-5 on Tuesdays until December. From December to March MWF its open 9-11 A.M. Or call any time for a private tour. 515-597-2201 or 515-231-9174.

.....

## Huxley's Transcontinental Highway – Highway 69

By Janet Stoll

The year 2013 marks the 100<sup>th</sup> year for the first east / west transcontinental highway, “The Lincoln Highway.” To pay personal tribute during this celebration I decided to take Lincoln Highway on the way home from my Wyoming vacation. I jumped on this famous roadway at Kimball Nebraska and traveled all the way to Ames before exiting off onto highway 69 to come home to Huxley.

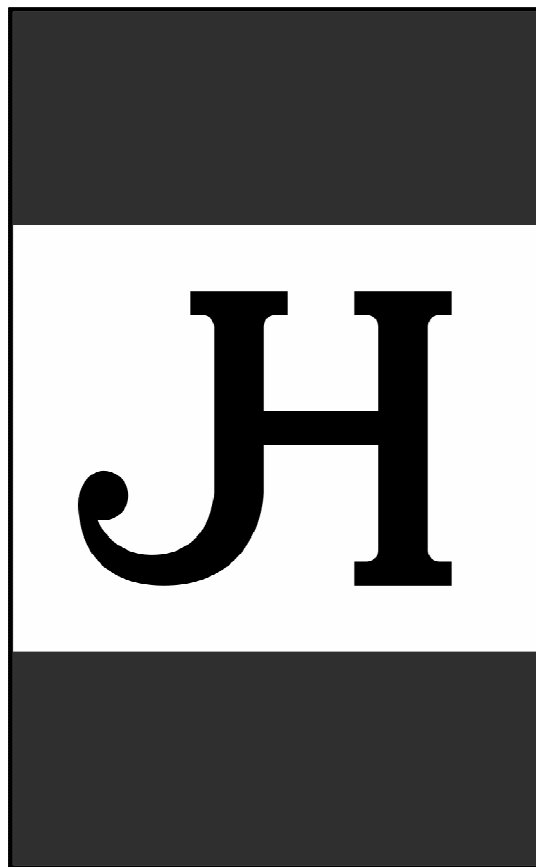
It was hard not to notice the decline of the communities along this route; some towns might even be called ghost towns. Also, most of the towns were situated either along the railroad or sandwiched in between Lincoln highway and the rail line and it took only about 15 to 20 minutes to drive between each town. But with the completion of Interstate 80, it took the passing travelers away from these towns, businesses, and sights of Iowa; and for the most part, straight through Iowa with rest areas plotted along the way.

So during my travels I compared the similarities of these towns to our very own Huxley. Highway 69 once upon a time ago was called the Jefferson Highway and it was the first north / south transcontinental highway. There was a rail line that ran along the south side of Huxley and a passenger train that ran the west side of Huxley. Highway 69 went right through the middle of Huxley on Main Street and many travelers stopped at our businesses.

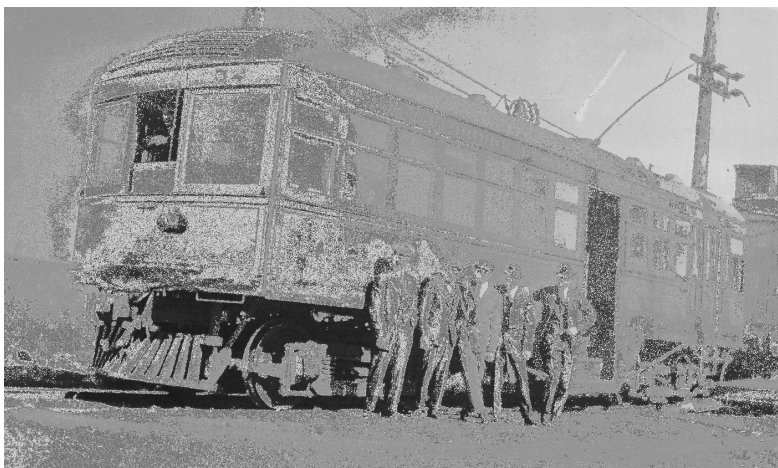
In the early 1930's, Highway 69/65 was rerouted so that it curved around Huxley. Did this rerouting affect the businesses on Main Street, and, what new businesses popped up along the new route?

Much change came to Huxley in the 1960's once Interstate 35 was completed. Although it is only one mile east of Huxley and Highway 69, it changed Huxley forever.

Between 1965 and 1985 Huxley lost both rail lines and most of the passing travelers because of the Interstate, so, one of the biggest questions I have is, “how did our town of Huxley not become a ghost town?”



## Huxley Historical Society Annual Meeting



Our annual meeting was held on April 13, 2013 in the Huxley Safe Room. We had a great attendance for the *Transportation* themed program and a Norwegian themed luncheon was served. Sixty to seventy people attended the meeting.

Guest speakers were Nels Nord, Owen “John” Kalsem, and David Kalsem, a big thanks to each of them for sharing their stories. A special thanks to all the folks who made the luncheon possible; Burke Marketing of Nevada and Bob Nervig for donating the meatballs, Karen Anderson for donating her homemade Kringla, and members of the Huxley Historical Society for preparing and serving the lunch, Rowena Nord, Karen Anderson, Celeste Allen, Darlene Kalsem, Ikey Lee, and Gloria Wilkening.



Lifetime members Duane and Barbara Finch were personally thanked and presented a certificate for their \$500.00 donation to the historical society. Also thanked, but not in attendance, was Paul and Florence Sandve; their certificate was mailed to them.







Our lovely hostesses & chefs  
above and right with some  
attendees pictured below.



**MEMBERSHIPS CAN BE ACCEPTED AT ANNUAL MEETING OR  
CLIPPED AND MAILED FROM BACK PAGE**

Do you know someone who would enjoy our newsletter? Let us know we will send them a complementary copy!

We also accept gift subscriptions—let us know who to send it to.

Call Michele at 515-450-0764 with the information.

# Thank you for paying your dues. We appreciate it very much.

Please consider joining as a LIFETIME member and never have to worry about renewing again.

A LIFETIME membership is easy (form on the back) it means so much to HHS. Our endeavor leads us to the need of a building and archival quality storage to protect our items . We have A LOT of delicate photo's, fabrics, and papers. Some of our collection is on display in our 3C's room but, much more is stored where it can not be explored or rediscovered. Additionally we continually turn down items due to our lack of ability to keep in safety.

Be sure and come to a meeting when you can because even as we need financial assistance we also need help making good plans for our future. NOT to mention the great stories we share!

The following are Lifetime members who agree with our mission.

Boyd Antill & Mary Tomlinson

John Berhow

Homer & Kay Kalsem

Laverne & Elaine Helland

Elizabeth & Javerna Maland

Darlene & Robert Hermann

Nels & Rowena Nord

Dave & Cheryl Kalsem

Harriett Sheldahl

John & Ann Kalsem

Janet & Gary Thompson

Dean & Diane Lande

David & Verda Tesdall

Paul & Florence Sandve

Omar & Valerie Brendeland

Duane & Barbara Finch

Avis Stensland

# THE HUXONIAN

VOL. V.

Huxley, Iowa, Thursday,

March 11, 1943

No. 11.

## SPORTS

### Huxley Wins First Tournament Game by Beating Shipley 39-11

HUXLEY – 39	FG
FT F	Larson, F
4 1 2	Fjelland, F
8 2 1	Halverson, C
3 2 2	Hildreth, G
0 0 1	Ryerson, G
2 0 2	Hendricks
0 0 0	Sheldahl
0 0 0	Dobbe
0 0 0	Rullestad
0 0 0	Severseike
0 0 0	SHIPLEY – 11
FG FT F	Lewis, F
2 1 2	Akerman, F
1 2 4	Jenson, C
1 0 1	Nelson, G
0 0 2	Shearer, G
0 0 3	Akers
0 0 0	

Missed Free Throws: Larson 3, Fjelland 2, Halverson 2, Hildreth 1, Ryerson 2, Rullestad 2. Shipley: Lewis 1, Akerman 3, Jenson 1, Nelson 1.

March 3: Huxley coasted to an easy victory by beating Shipley with points to spare. Shipley had plenty of height, but had trouble hitting the basket. High point man for Huxley was Avernol Fjelland with 18 points. For Shipley it was Lewis, with 5 points. With this victory Huxley enters the second round of the tournament.

## SCHOOL

Five new students have enrolled in the Huxley school, since the moving season began. The five are: John, Stanley and Clarice Hillebo, who are in the first, second and fourth grades, respectively and who formerly attended the White Oak School; Lorraine Dobbe, a junior in high school, and Dorothy Ann Dobbe, eighth grade, both of whom moved here from Fairfield, South Dakota.

## ADVERTISEMENTS

**INGRAM  
SERVICE STATION**  
Gasoline, Oils & Greases  
Phone 45 Huxley, Iowa

**PHONE 25  
H. L. MUNN  
Lumber Co.  
LUMBER COAL  
PAINT  
GRAIN & FEED  
HUXLEY, IOWA**

**KVALE MARKET**  
GROCERIES & MEATS  
Huxley, Iowa

**DR. O. F. FREED**  
VETERINARIAN  
PHONE 74 Huxley

**ELLIOTT  
D-X STATION**  
Tires, Tubes and Repairing  
Batteries and Battery Charging GAS  
- OIL - GREASING - ETC.  
PHONE 75 HUXLEY, IOWA

**ELI WEE**  
PORTABLE FEED MILL  
PHONE 66 HUXLEY, IA.

**758 No. 2 War Ration  
Books Were Issued**

## Registrars Have a Busy Time

During the entire course of registration for the rationing of commercially canned and processed foods, which was conducted at the Huxley school house from Monday, Feb. 22, through Thursday, Feb. 25, Huxley registrars issued 758 War Ration (No. 2) Books. Five sugar ration books were also issued.

Total number of declarations received was 239.

At the time of registration the coffee stamps were removed from the sugar ration books of all children under 14 years of age. In all, 2068 coffee stamps were removed from the sugar ration books.

Number 8 stamps removed from the new ration books totaled 580. One of these stamps was removed for each can of the food to be rationed, that an individual had on hand in excess of the allotted five cans per person.

Registrars for the Huxley school were: Miss Iona Wise, Miss Dorothy Smith, Miss Emilie Amlund, Miss Gladys Buerkens, Mrs. E.R. Burr, Miss Mary Elizabeth Wyland, Miss Mary Jane Baron, Miss Lola Legore, Supt. M.E. Sederburg, Mrs. O.C. Freese, Mrs. Martin Tesdahl, Mrs. Ralph Stoeber, Mrs. Milton Dobbe, Mrs. Orval Elliott, Mrs. O.B. Berhow, Rev. H.E. Jacobson and Rev. P.V. Sampson. They donated their services and time to make it possible for the school to issue these ration books.

School was dismissed at two o'clock on Monday and Tuesday and at three o'clock on Wednesday afternoon because of registration.

## Letter to WWII service members from Val Racek.

Huxley, Iowa  
May, 1945

Dear Friends in the Service:

Thank you for the many fine letters we have received from you. It's mighty fine of you to write when you are so busy. Many things have happened since our last letter but the most important one is Victory in Europe and for this we hope and pray for in Japan. It can't come too soon. But while you're doing up the job that remains, we'll plug away back home and raise all the food we can. And that is no little job.

Pastor Halleksen will write on the progress of our church so I'll omit that part.

March was mild and warm but April was almost cold. And even now it's not too warm. May 9th gave us a good snow storm. Western Iowa had  $3\frac{1}{2}$  inches of snow. Planting corn is under way but much remains to be done. Tonight it started raining so that may hold us up some more. Last week the Waldorf Choir gave concerts in the Slater Palestine churches and also in the Huxley Gym for Fjeldberg. It was very good and we enjoyed it very much since four of our girls sang in the choir. Lorraine Dobbs, Marjorie Sydnas, Beverley Richardson, and Ruth Racek. Ruth graduates on May 20th. Also on May 6th at 8:00 p.m. was the annual Baccalaureate Service. Pastor Jacobsen giving the sermon. On May 9th we had our Commencement Exercises. Those graduating are: Lois Dobbs, David Freed, Helen Sydnas, John Lewis, Helen Newgaard, Florence Lande, Avernot Fjelland, Mildred Westvold and Edith Ann Ryerson. Pastor L. A. Pierson gave the address. He spoke on "Learning to Live". May 11th was the closing day of school at which time they had the school picnic. Instead of bringing baskets of lunch, the ladies handling the Hot Lunch Program served dinner to nearly three hundred. I hope each one of you will come up to school and sample the fine lunches served to the children every day at school. Most of the teachers are hired for next year and we believe they represent a strong faculty.

John Dobbs passed away this morning. You will remember him as Milton and Elmer's dad. Chas. Christensen has been ill for some time. I think it is heart trouble. For the most of us, we're feeling fine and doing what we can back home. I want you all to know that when victory was proclaimed over Germany there were no wild celebrations near here. In and around Huxley the people gathered in their respective places of worship to give thanks and praise to Almighty God for the Victory won and for strength to finish the task that lies ahead. We trust that the Japs may soon surrender because of the overwhelming might that will be brought against them. So our prayers go up for you daily who are bearing the burden of this war. You alone know how hard it has been and our hearts go out to you in spirit if not in deed. One thought which often comes to me is "How can we give you a fitting 'Welcome Home' when you reach Huxley". The folks back home think and talk about it.



When I wrote and told you of Fjeldberg church burning, I never intended it as a plea for money from our soldier boys. And now we've been receiving letters containing checks all the way from \$50 to \$100. You move our hearts in gratitude. After going out and serving your country at war you stir us to action back home by your generous giving. With young men like that by the Grace of God our church at Huxley will never die. May God Bless and reward you richly and when the time comes may we worship together at Huxley in a beautiful new church.

Even if these letters don't come as often as they should, kindly bear with us and remember we've not forgotten you. Our prayers shall continue until you all reach home.

As ever

In His Service

Boys Bible Class

Val Racek

Hebrews 12:1 & 2

Hebrews 11:6

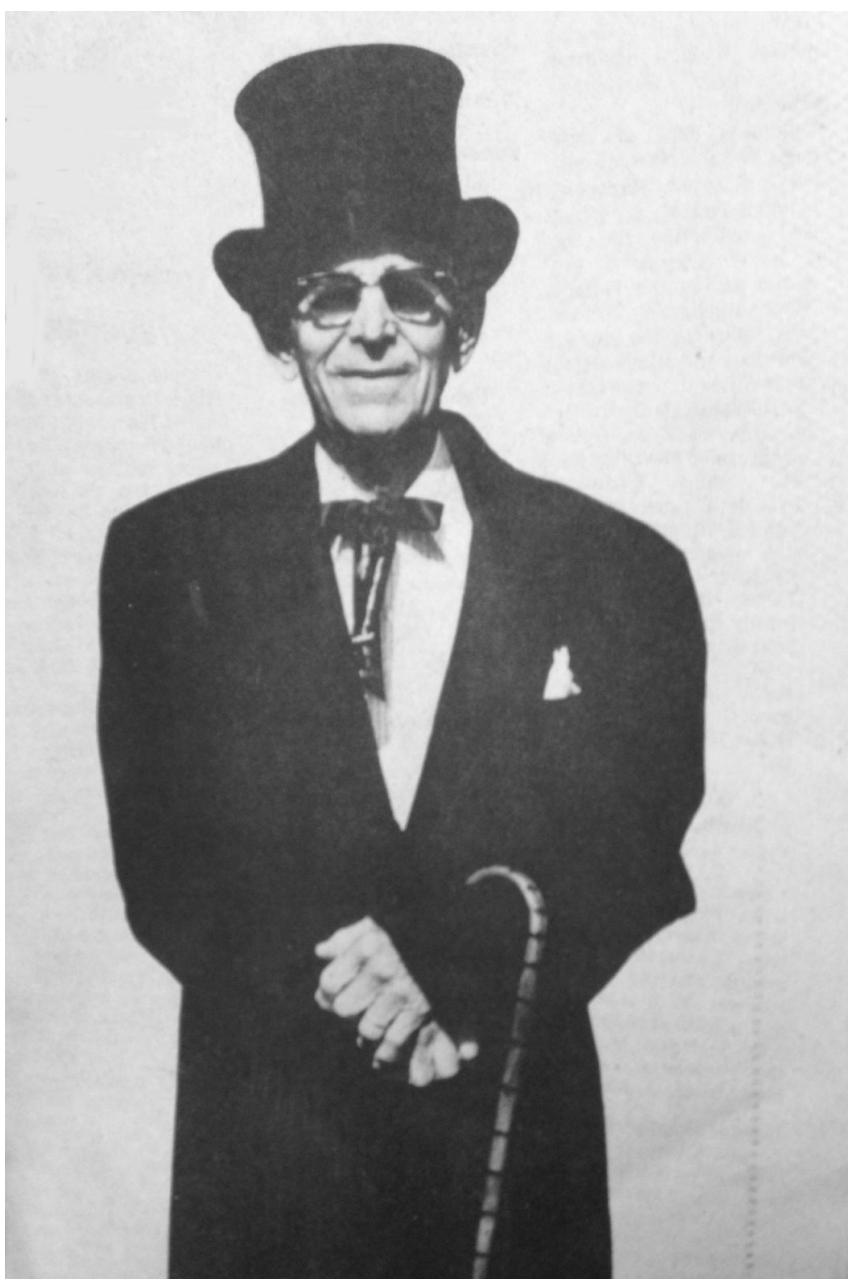
John 4:23 & 24

James 1:6 & 7

Isaiah 58:9

Val E. Racek (pictured right) was born August 21, 1897 in Wisconsin and passed away in Huxley, Iowa in 1984. At a young age, Val came to Alleman, Iowa to work on his Uncle Louis Accola's farm. He later bought his own farm northwest of Huxley and became a very successful farmer and seed- corn dealer.

This original copy of a letter Val wrote to those serving in WWII.



**Membership Form—Clip or Copy and Mail**

Name \_\_\_\_\_

Address \_\_\_\_\_

Email \_\_\_\_\_

Phone \_\_\_\_\_

**Circle those that apply please.**

Annual 2013 \$20

Family 2013 \$30

Lifetime Membership \$500

Gift Amount \$\_\_\_\_\_

2nd ed. DVD Purchase \$20

S&amp;H for DVD \$2.50

Total \$\_\_\_\_\_

RSVP TO ANNUAL MEETING # ATTENDING \_\_\_\_\_

Mail To:

***HHS-515 N. Main Ave-Huxley Iowa. 50124***

FOR MORE INFORMATION PLEASE  
CONTACT US AT ONE OF THE FOLLOWING:

PHONE: NELS NORD 515-231-9174

EMAIL: HHS@HUXCOMM.NET

WEB SITE:  
WWW.HISTORY.HUXLEYIOWA.ORG

**HUXLEY****HISTORICAL****SOCIETY**

515 N. Main Ave.  
Huxley Iowa. 50124

